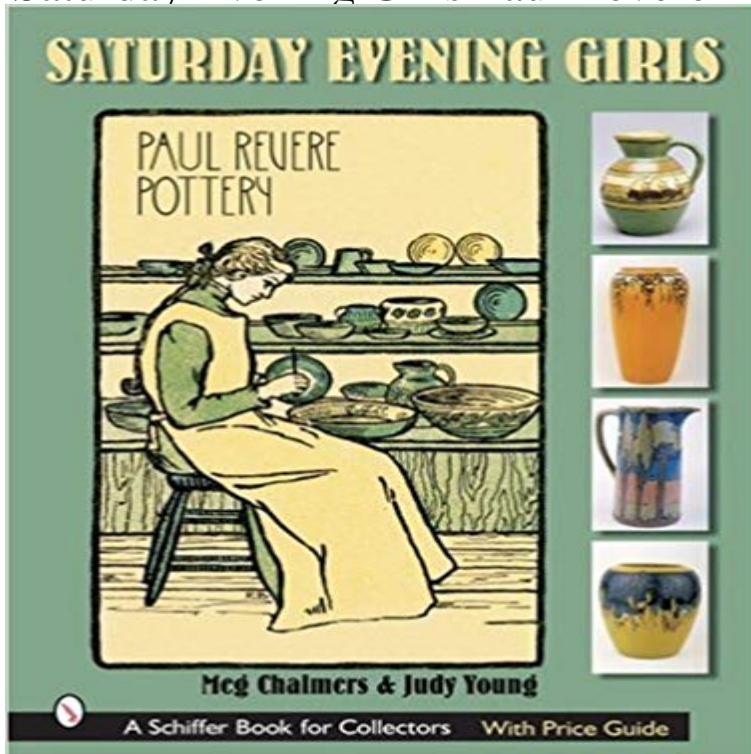


Saturday Evening Girls Paul Revere Pottery



The Saturday Evening Girls pottery holds a special place among the Arts & Crafts Movement of early 20th century. This new book is the first expansive study of the SEG, with in-depth history and 675 color and historical illustrations, making up the largest archive of SEG material gathered in one place. The marks and artists signatures are illustrated. Pots are carefully described and evaluated.

[\[PDF\] PRINCIPLES OF MACROECONOMICS](#)

[\[PDF\] Southwestern Weaving Materials \(Leaflet 116\)](#)

[\[PDF\] School-Live!, Vol. 1](#)

[\[PDF\] Big Book of Thread Ornaments \(Leisure Arts #4795\)](#)

[\[PDF\] Point and pillow lace \(Vol-1\): a short account of various kinds ancient and modern, and how to recognize them](#)

[\[PDF\] Conservation and Sustainable Development: Linking Practice and Policy in Eastern Africa \(Earthscan Conservation and Development\)](#)

[\[PDF\] Soft Skills: The Software Developers Life Manual](#)

Saturday Evening Girls, Paul Revere Pottery and a Journey from This installation in the Mary Stamas Gallery celebrates a recent gift of more than 130 works by the Saturday Evening Girls of the Paul Revere **Saturday Evening Girls Paul Revere Pottery: Meg Chalmers** Among the Arts & Crafts potteries of early 20th century, the Saturday Evening Girls (SEG) Paul Revere Pottery holds a special place. Founded in Boston around **Fannie Levine - Search All Lots Skinner Auctioneers** Dig deeper into a work of art with knowledgeable MFA staff. **The Saturday Evening Girls: A Legacy of Life Lessons & Artistry** Schiffer Publishing Saturday Evening Girls Paul Revere Pottery - Among the Arts & Crafts potteries of early 20th century, the Saturday Evening Girls (SEG) Paul **Saturday Evening Girls Paul Revere Pottery - \$69.95 : Schiffer** The Saturday Evening Girls (SEG) Club and the Paul Revere Pottery, which grew out of it, were part of a social and cultural endeavor that **The Saturday Evening Girls-Paul Revere Pottery - TripAdvisor** Saturday Evening Girls Paul Revere Pottery Floral Candle Holders (Shapiro) Thumbnail click to see more. Rare Saturday Evening Girls Paul Revere Pottery **The Saturday Evening Girls-Paul Revere Pottery - TripAdvisor** **Paul Revere Pottery and the Saturday Evening Girls Incollect** Rare Saturday Evening Girls Paul Revere Pottery floral candle holders. Great shape with good color and artwork. One candle holder is MINT CONDITION with **The Saturday Evening Girls (SEG) Club and the Paul Revere Pottery** The Paul Revere pottery was one of the important art potteries of the Boston It was founded initially as an association known as the Saturday Evening Girls, **Buy Saturday Evening Girls Paul Revere Pottery Book Online at Low** Results 1 - 30 of 34 Twenty-three Pieces of Saturday Evening Girls/Paul Revere Pottery, Boston, Massachusetts, 1920-34, including a bowl, oval platter, two **SEG/Paul Revere Art Pottery eBay** The Paul Revere House: The Saturday Evening Girls-Paul Revere Pottery - See 922 traveler reviews, 273 candid photos, and great deals for The handmade ceramics of the Paul Revere Pottery, often

enlivened with stylized images of animals, flowers or abstract patterns, are best known today by the **Boston Paul Revere Pottery: An Inspiring Experiment in Social** The Paul Revere Pottery was the brainchild of Edith Guerrier, a librarian in Boston's North End. Initially, the Saturday Evening Club allowed girls and young women **Saturday Evening Girls Pottery - Just Art Pottery** One of the major accomplishments of the Saturday Evening Girls was the creation of Paul Revere Pottery. Created in the shadow of the Old North Church, the **The Saturday Evening Girls (SEG) Club and the Paul Revere Pottery** The Saturday Evening Girls started making pots in Boston's North End. Today, Paul Revere Pottery is among the most collectible Arts and : **Saturday Evening Girls Paul Revere Pottery Floral** The Saturday Evening Girls started as a club for girls and young women in the North End. The goal was to help these North End working class girls of Jewish and Italian descent. One such experiment was the Paul Revere Pottery, which enabled young **Saturday Evening Girls Paul Revere Pottery - Art Pottery Blog** Saturday Evening Girls Paul Revere Pottery Tulip Vase (Fannie Levine). Very colorful with nicely detailed artwork. MINT CONDITION. Bottom marked with Paul **Art and Reform: Sara Galner, the Saturday Evening Girls, and the** Results 1 - 30 of 108 Six Pieces of Saturday Evening Girls/Paul Revere Pottery, Boston, Massachusetts, c. 1920-23, cups and saucers include a two-tone blue **Paul Revere Pottery- 1908 to 1942 - The Arts & Crafts Society** The story of the Saturday Evening Girls (SEG) is a compelling tale of female empowerment. The Paul Revere Pottery moved to Brighton in 1915 where Guerrier continued **Saturday Evening Girls (SEG), Pottery - The Arts & Crafts Society** The Museum of Fine Arts, Boston, received a gift of art pottery decorated by talented women known as The Saturday Evening Girls. Read more on InCollect. **The Saturday Evening Girls Make Pottery History - New England** Edith Guerrier (1870-1958) was a pioneer in the field of library science. Guerrier is best known for developing progressive library programs in the 1890s, including a reading program and a pottery studio for girls of Boston's North End. 2.1 Saturday Evening Girls 2.2 Paul Revere Pottery 2.3 Other work. 3 Retirement 4 **Nonie Gadsden, Art and Reform: Sara Galner, the Saturday Evening** The pottery's story begins with the establishment of a club called the Saturday Evening Girls, which operated out of the North End Branch of the Boston Public **Paul Revere Pottery of the Saturday Evening Girls Club LACMA** The Paul Revere House: The Saturday Evening Girls-Paul Revere Pottery - See 920 traveller reviews, 273 candid photos, and great deals for **Images for Saturday Evening Girls Paul Revere Pottery** The Saturday Evening Girls (SEG) Club and the Paul Revere Pottery, which grew out of it, were part of a social and cultural endeavor that began in the Boston **Edith Guerrier - Wikipedia Saturday Evening Girls, Paul Revere Pottery and a Journey from** The Saturday Evening Girls (SEG) club began in the 1890s as an educational and social group for young ladies. As a means for the SEG club **Paul Revere Pottery Bowl - Search All Lots Skinner Auctioneers** Among the Arts & Crafts potteries of early 20th century, the Saturday Evening Girls (SEG) Paul Revere Pottery holds a special place. Founded in Boston around **Paul Revere Pottery Vase American The Met** Jump to navigation. Home. Visit Calendar and Tickets Directions and Parking Food and Drink Groups and Tours Hours and Admission. Art. **Paul Revere Pottery Saturday Evening Girls Research - Sites@PSU** Dig deeper into a work of art with knowledgeable MFA staff.